







3



1



2

- Professional Landlord
- White Goods Included
- Pets Considered
- Long Term Tenancies Available
- Council Tax Band: C
- Brand New Property
- Off Road Parking
- Call For More Information
- Zero Deposit Option Available







ZERO DEPOSIT OPTION AVAILABLE. Jan Forster Estates are delighted to offer this brand new 'Norbury', located in the magnificent new development called West Meadows in Cramlington.

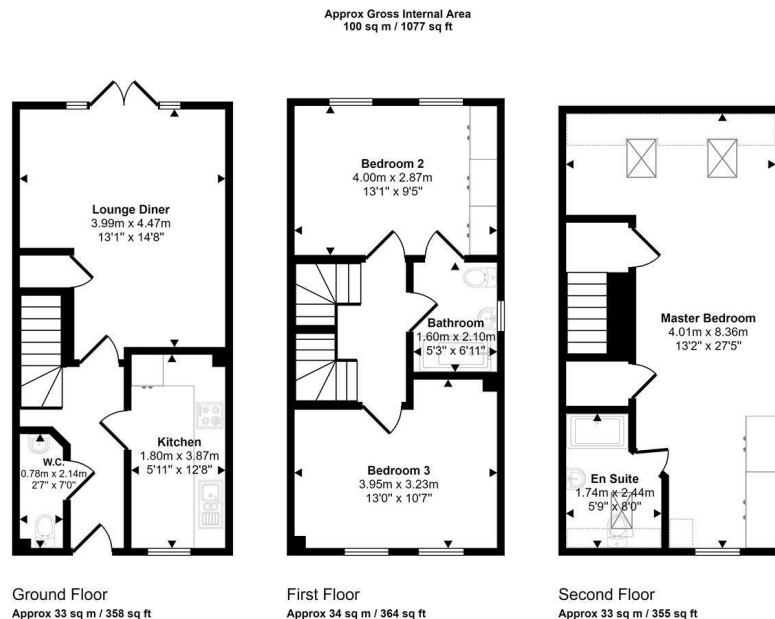
Living here means you can enjoy country walks at Northumberlandia, just minutes from your doorstep. As well as being a short drive or walk from Manor Walks shopping centre and Cramlington train station. With local amenities, close access to the A19 and A1 and schools rated 'Good' nearby, West Meadows is the perfect place for your family to call home.

An impressive three-storey, 3-bedroom home. The ground floor opens with a modern kitchen to the front and a spacious lounge diner to the rear. French doors extend the living space into the garden, and there is also a WC and a handy storage cupboard. The first floor presents two generous double bedrooms with excellent storage space and a contemporary family bathroom. Occupying the entire top floor, the expansive main suite features a dressing area, luxury en-suite, and additional storage. Externally there is an enclosed garden to the rear, ideal for relaxing or entertaining and there are two parking bays.

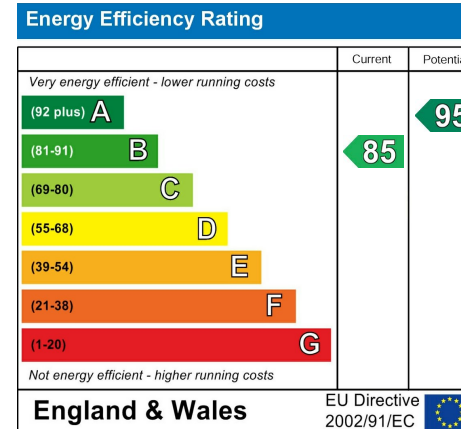


Lomond, on behalf of Lloyds Living, part of Lloyds Banking Group, operates a growing portfolio of more than 3,000 professionally managed homes for rent, improving access to good value, quality, sustainable housing across the UK. Lloyds Living helps to support investment into local communities by building and renting homes that people want, in the places they are needed.

Property features and specifications may vary on a plot-by-plot basis. Whilst every attempt has been made to ensure accuracy, all measurements are approximate and not to scale. Computer-generated images, floor plans, and photos (CGIs) are for illustrative purposes only and may not represent the final design or finish of the property. For further information on layouts and specifications, please speak to your Lloyds Living representative.



Denotes head height below 1.5m  
Whilst every attempt has been made to ensure the accuracy of the floor plan contained here, measurements of doors, windows, rooms and any other items are approximate and no responsibility is taken for any error, omission, or mis-statement. The measurements should not be relied upon for valuation, transaction and/or funding purposes. This plan is for illustrative purposes only and should be used as such by any prospective purchaser or tenant.



## The difference between house and home

You may download, store and use the material for your own personal use and research. You may not republish, retransmit, redistribute or otherwise make the material available to any party or make the same available on any website, online service or bulletin board of your own or of any other party or make the same available in hard copy or in any other media without the website owner's express prior written consent. The website owner's copyright must remain on all reproductions of material taken from this website.



[www.janforsterestates.com](http://www.janforsterestates.com)

**Contact Us: 0191 236 2070**

